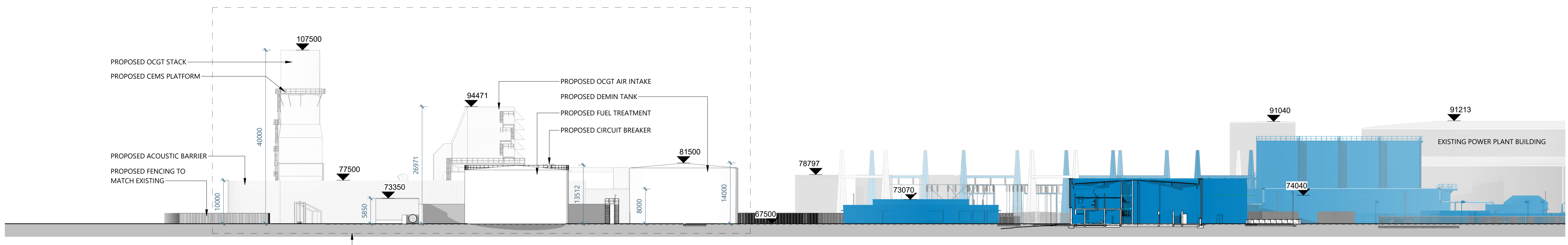
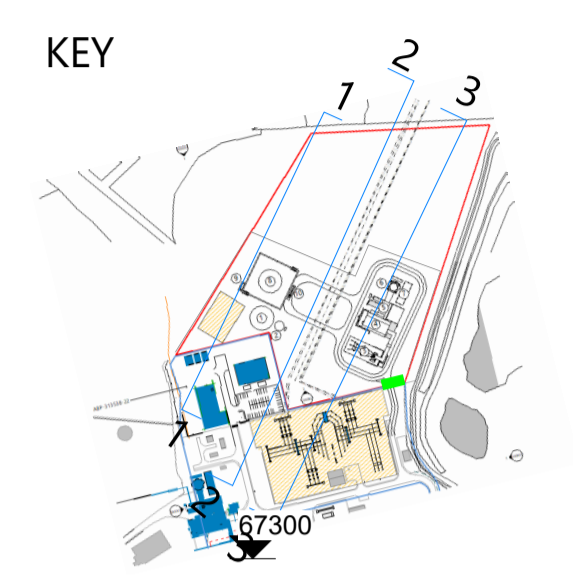


**DISCLAIMER:**  
TODD Architects confirm that recipients can only rely on approved controlled document formats in construction projects. Controlled document formats include original hard copy drawings issued by TODD Architects, or unprinted PDF/DWG images of drawings received from TODD Architects.  
TODD Architects cannot ensure the accuracy of drawings, used in an uncontrolled document format which may be altered or misinterpreted as a result of human error on the part of the recipient, or as a result of the incompatibility of computer systems when opening or printing computer aided drawings. Uncontrolled document formats include computer aided design files, prints which have been created by the recipient from non-controlled file formats, photocopies of original hard copy drawings from TODD Architects, draft drawings supplied by TODD Architects for information purposes only.  
TODD Architects accept no responsibility for any loss or damage arising as a result of reliance by the recipient or any third party on uncontrolled document formats, reliance upon which will be entirely at the risk of the recipient.  
Contractors are responsible for the verification of all dimensions on site and the architect is to be informed of any discrepancy.  
Do not scale from this drawing.  
Use figured dimensions only.

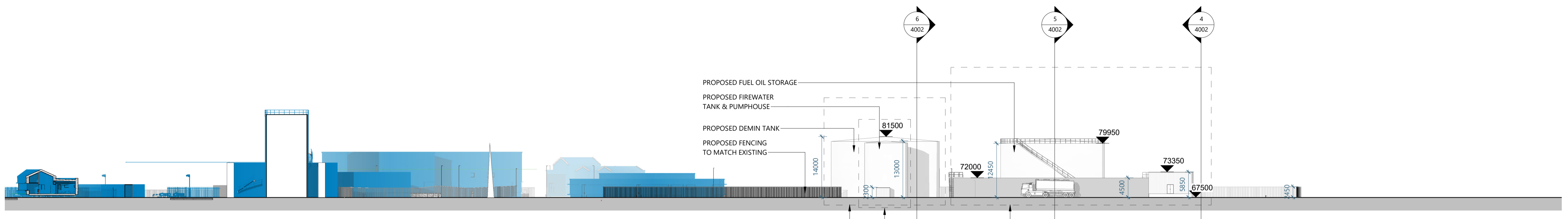


**Section 1**  
1 : 500

REFER TO DRAWING S3577-8330-0001

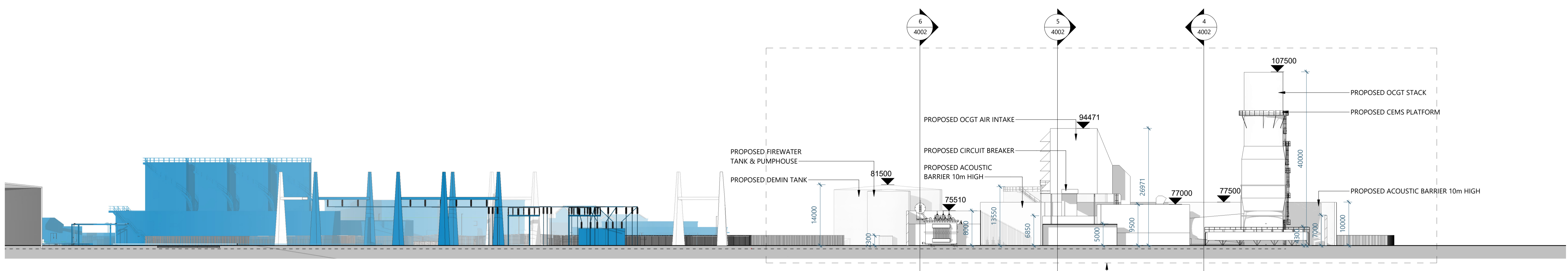


**LEGEND:**  
SITE BOUNDARY  
ABP Appeal Ref: 313538-22



**Section 2**  
1 : 500

REFER TO DRAWING S3577-8330-0005  
REFER TO DRAWING S3577-8330-0003  
REFER TO DRAWING S3577-8330-0004



**Section 3**  
1 : 500

REFER TO DRAWING S3577-8330-0001

Rev:	Date:	Description:	Drawn by:	Chkd by:
Client: EP ENERGY DEVELOPMENTS Ltd.				
Project Name: TYNAGH NORTH OCGT				
Drawing Title: Section Drawings - Proposed Site Sections				
<b>TODD Architects</b> 2nd Floor Titanic House, 6 Queens Road, Belfast, BT3 9DT T: +44 (0) 28 904 5587 E: info@toddarch.co.uk				
Date:	12/11/21	Drawn by:	AS	Chkd by:
		PL	Scale:	As indicated
Project No:	21024	Status:	Planning Application	Page:
Page:		Revision:		A1
Drawing Number: <b>TYN-TOD-ZZ-DR-A-4001</b>				
© TODD Architects Ltd. All rights reserved.				