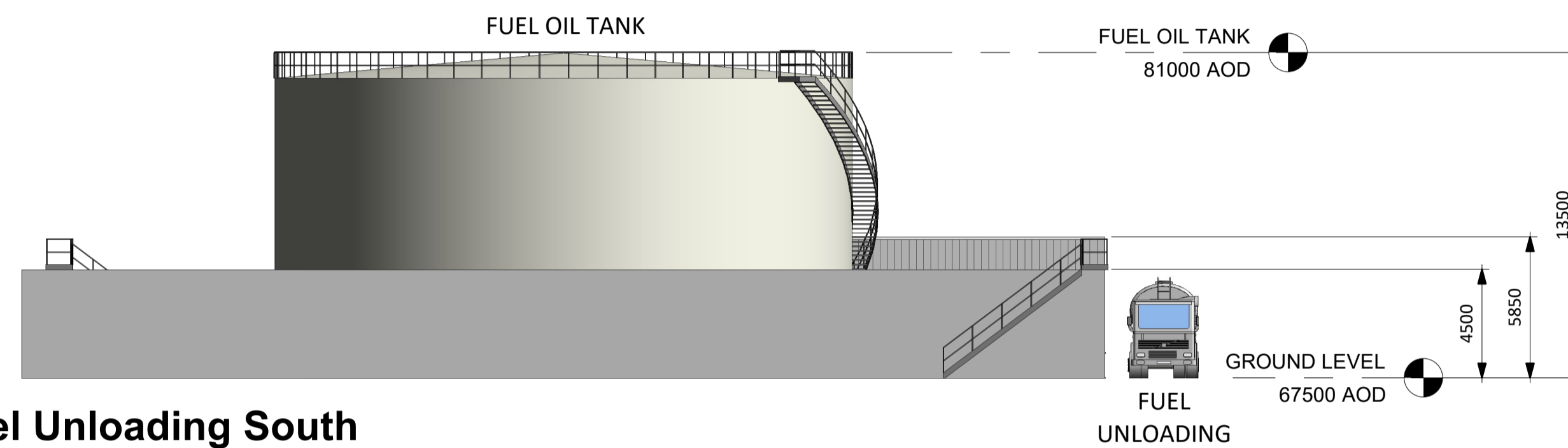
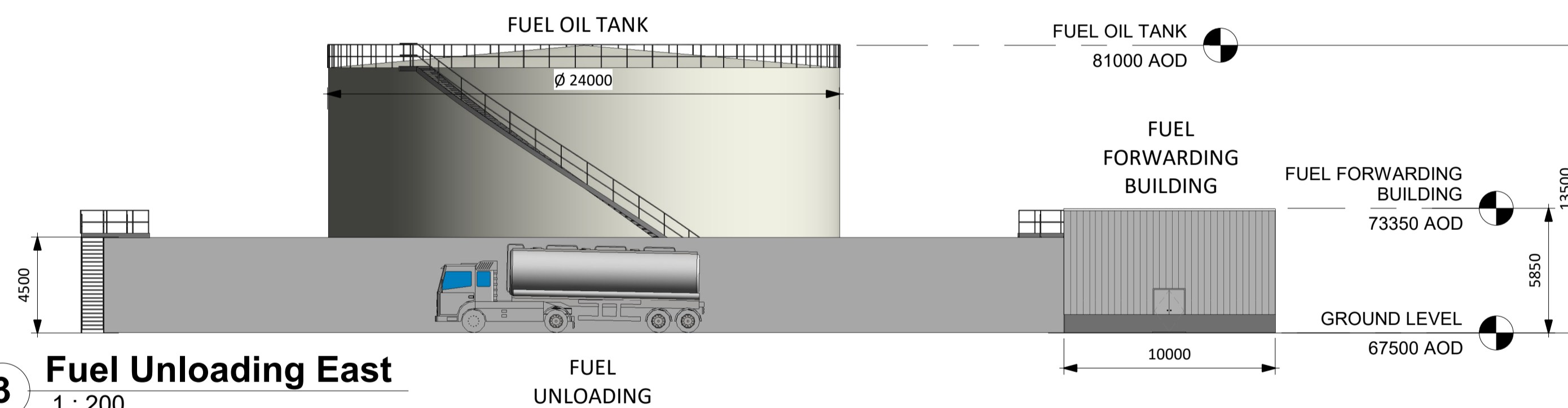


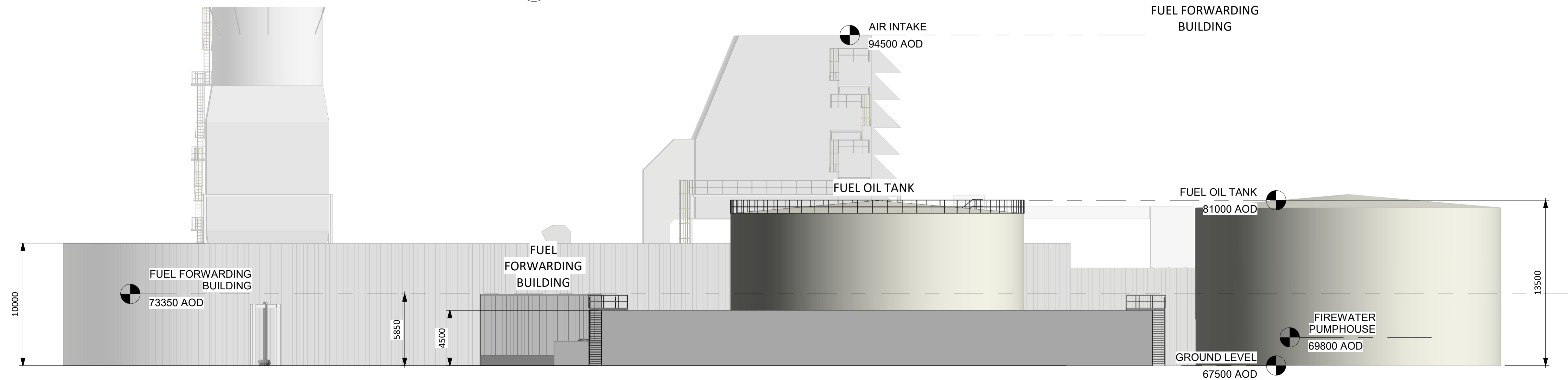
**1 Fuel Unloading North**  
1 : 200



**2 Fuel Unloading South**  
1 : 200



**3 Fuel Unloading East**  
1 : 200



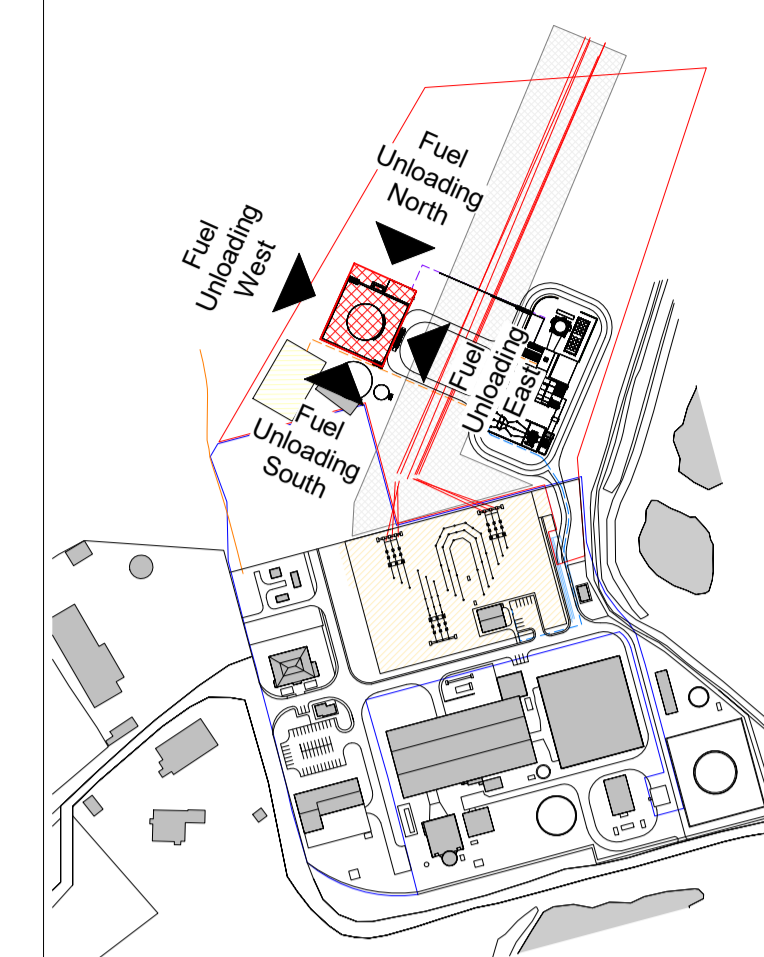
**4 Fuel Unloading West**  
1 : 200



ALL INFORMATION ON THIS DRAWING IS SUBJECT TO REVISION AT DETAILED DESIGN

DO NOT SCALE

NOTES:



**Fuel Unloading Key Plan**  
1 : 5000

R4.0	PRELIMINARY	EMC	AO1	HHE	08.02.23
R3.0	PRELIMINARY	DTW	AO1	HHE	25.01.23
R2.0	PRELIMINARY	DTW	AO1	HHE	05.01.23
R1.0	PRELIMINARY	DTW	AO1	HHE	22.12.22
REV.	DETAILS OF REVISION	DRAWN	CHKD	APR	DATE

**FICHTNER**  
CONSULTING ENGINEERS LIMITED  
92 George's Street Lower  
Dun Laoghaire  
Co Dublin, A96 VR66  
Tel: +353 (1) 506 0632  
Website: www.fichtner.ie

CLIENT: EPED  
SITE: TYNAGH NORTH  
PROJECT: TYNAGH NORTH  
TITLE: FUEL UNLOADING AREA ELEVATIONS

TODDS DRAWING No.:  
DRAWING STATUS: FOR PLANNING  
DRAWN BY: DTW DATE: 14.12.22  
CHECKED BY: AO1 DATE: 14.12.22  
APPROVED BY: HHE DATE: 14.12.22  
FILENAME: S3577-8910-0001DW Tynagh North OCGT R1.0  
OFFICE OF ISSUE: DUBLIN  
SHEET SIZE: A1 SCALE: 1:200  
FICHTNER DRAWING No.: S3577-8330-0004 REVISION: R4.0  
Sheet 1 of 1